
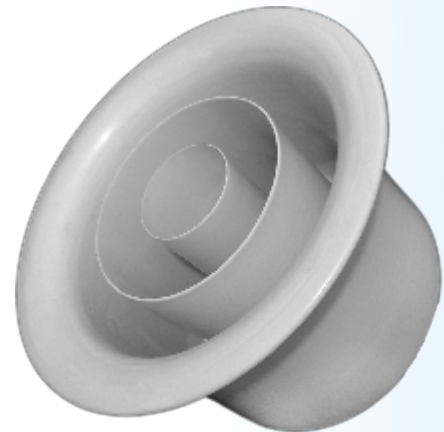
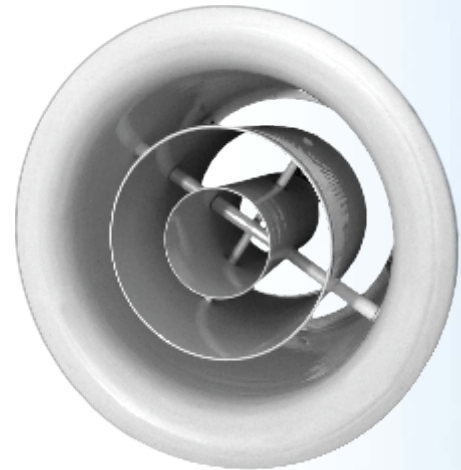


JET NOZZLE



Jet Nozzel Diffusers - CA

-  Jet Nozzel Diffusers - CA diffuser provides precise control of high capacity jets
- The TurboFuser is a versatile diffuser for demanding spot cooling and heating HVAC applications, such as industrial or large open areas
- An aesthetic alternative to conventional air distribution providing a contemporary look for sports complexes, atriums and lobbies
- Material is heavy-duty aluminum
- Deep deflection rings in each nozzle for maintaining directional control at high velocities up to 30 degrees in any direction
- Nozzle sizes are 6", 8", 10", 12" and 14", with up to four nozzles per panel
- Each ring of the nozzle assembly is 1-piece spun construction



AVAILABLE MODEL:

CA / Aluminum

FINISH

Standard Finish - #26 White

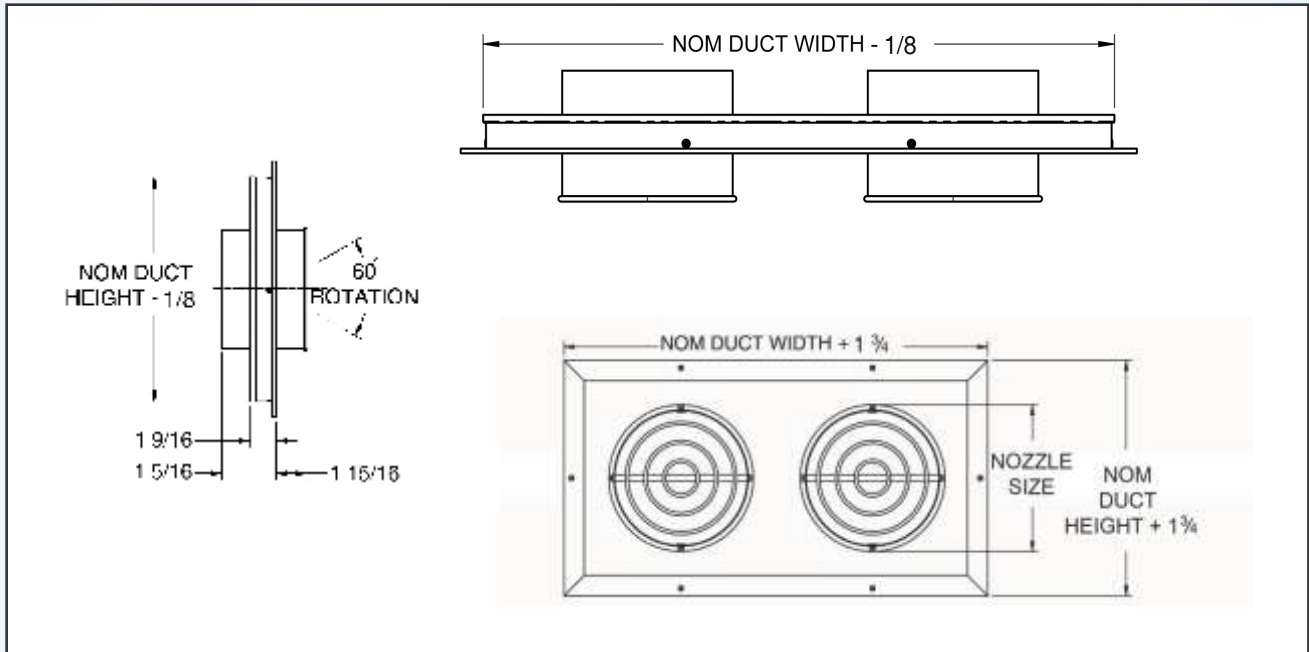
OVERVIEW

Panel-Mounted Nozzles

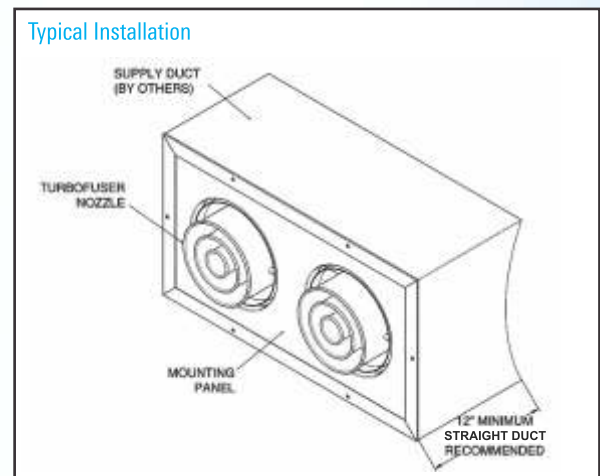
Jet Nozzel Diffusers - CA diffusers provide precise control of high capacity jets. This is a versatile diffuser for demanding spot cooling and heating applications, such as industrial or large open areas. It also offers an aesthetic alternative to conventional air distributing providing a contemporary look for sports complexes, atriums and lobbies.



CA UNIT DIMENSIONS



Nozzle Size (inches)	NOM Duct Height	Width by Number of Nozzles			
		1	2	3	4
6	10	10	19	28	37
8	12	12	23	34	45
10	14	14	27	40	53
12	16	16	31	46	61
14	18	18	35	52	69



All dimensions are in inches



PERFORMANCE DATA :

CA / PANEL-MOUNTED NOZZLES

	Duct Velocity, fpm	200	300	400	500	600	700	800
	Velocity Pressure, IN WG	0.002	0.006	0.010	0.016	0.022	0.031	0.040
Size 6 1 Nozzle	Airflow, cfm	135	203	271	339	406	474	542
	Total Pressure, IN WG	0.076	0.171	0.303	0.474	0.683	0.929	1.214
	NC (Noise Criteria)	-	13	24	32	38	44	50
	Throw, FT	12-15-20	14-17-25	17-20-29	19-23-33	21-25-36	22-27-39	24-29-43
Size 6 2 Nozzle	Airflow, cfm	259	388	518	647	777	906	1036
	Total Pressure, IN WG	0.070	0.158	0.281	0.440	0.633	0.862	1.125
	NC (Noise Criteria)	-	18	29	36	43	49	54
	Throw, FT	17-20-29	20-24-35	23-29-41	26-32-46	29-35-51	31-28-55	34-41-60
Size 6 3 Nozzle	Airflow, cfm	382	573	765	956	1147	1338	1529
	Total Pressure, IN WG	0.070	0.157	0.278	0.435	0.626	0.853	1.114
	NC (Noise Criteria)	-	20	30	39	43	51	56
	Throw, FT	21-25-35	25-30-44	29-35-51	33-40-57	36-44-63	38-47-67	42-51-74
Size 6 4 Nozzle	Airflow, cfm	506	759	1012	1264	1517	1770	2023
	Total Pressure, IN WG	0.070	0.157	0.278	0.435	0.626	0.853	1.114
	NC (Noise Criteria)	-	23	33	41	48	53	58
	Throw, FT	23-29-40	28-34-49	33-40-57	37-45-64	41-49-71	43-54-76	48-57-83
Size 8 1 Nozzle	Airflow, cfm	196	294	392	490	588	685	783
	Total Pressure, IN WG	0.056	0.127	0.226	0.353	0.508	0.691	0.903
	NC (Noise Criteria)	-	15	19	27	34	39	45
	Throw, FT	15-17-25	17-21-30	20-25-34	22-27-40	25-30-43	27-32-47	29-34-51
Size 8 2 Nozzle	Airflow, cfm	377	566	755	943	1132	1320	1509
	Total Pressure, IN WG	0.053	0.118	0.210	0.328	0.473	0.644	0.841
	NC (Noise Criteria)	-	16	25	34	40	46	50
	Throw, FT	21-24-34	24-30-42	28-34-48	31-38-55	34-42-60	37-45-66	40-48-71
Size 8 3 Nozzle	Airflow, cfm	559	838	1117	1397	1676	1955	2235
	Total Pressure, IN WG	0.052	0.116	0.206	0.322	0.464	0.631	0.824
	NC (Noise Criteria)	-	18	29	36	42	49	53
	Throw, FT	26-30-42	30-37-52	35-42-59	38-48-68	42-52-75	46-56-82	50-59-88
Size 8 4 Nozzle	Airflow, cfm	740	1110	1480	1850	2220	2590	2961
	Total Pressure, IN WG	0.052	0.116	0.207	0.323	0.465	0.633	0.827
	NC (Noise Criteria)	-	18	29	37	43	50	54
	Throw, FT	29-34-48	34-42-59	39-48-67	43-54-78	48-59-85	52-64-93	56-67-100
Size 10 1 Nozzle	Airflow, cfm	267	401	535	668	802	936	1070
	Total Pressure, IN WG	0.037	0.084	0.149	0.232	0.334	0.455	0.594
	NC (Noise Criteria)	-	-	20	28	34	41	45
	Throw, FT	16-20-29	20-25-35	24-29-41	26-32-46	29-35-50	31-38-55	33-41-59
Size 10 2 Nozzle	Airflow, cfm	518	777	1036	1295	1554	1813	2072
	Total Pressure, IN WG	0.035	0.079	0.140	0.219	0.315	0.429	0.560
	NC (Noise Criteria)	-	14	25	33	35	45	52
	Throw, FT	23-28-40	28-35-50	33-40-57	37-44-64	40-50-70	43-54-76	47-57-83
Size 10 3 Nozzle	Airflow, cfm	768	1153	1537	1921	2305	2689	3074
	Total Pressure, IN WG	0.032	0.071	0.127	0.198	0.285	0.388	0.506
	NC (Noise Criteria)	-	16	27	34	42	47	53
	Throw, FT	28-34-50	34-43-61	41-50-70	45-55-79	50-61-87	54-66-95	57-70-102
Size 10 4 Nozzle	Airflow, cfm	1019	1528	2038	2547	3057	3566	4076
	Total Pressure, IN WG	0.031	0.071	0.125	0.196	0.282	0.384	0.501
	NC (Noise Criteria)	-	18	29	37	43	48	54
	Throw, FT	32-39-56	39-49-69	46-56-80	51-62-90	56-69-98	61-75-107	65-80-116



PERFORMANCE DATA :

CA / PANEL-MOUNTED NOZZLES

	Duct Velocity, fpm	200	300	400	500	600	700	800
	Velocity Pressure, IN WG	0.002	0.006	0.010	0.016	0.022	0.031	0.040
Size 12 1 Nozzle	Airflow, cfm	350	525	700	875	1050	1225	1400
	Total Pressure, IN WG	0.033	0.075	0.132	0.207	0.298	0.406	0.530
	NC (Noise Criteria)	-	-	18	27	33	39	47
	Throw, FT	19-23-33	23-28-40	27-33-47	30-36-52	33-40-58	35-43-62	38-47-67
Size 12 2 Nozzle	Airflow, cfm	681	1021	1362	1702	2042	2383	2723
	Total Pressure, IN WG	0.031	0.071	0.126	0.197	0.283	0.385	0.503
	NC (Noise Criteria)	-	16	27	35	42	47	53
	Throw, FT	26-32-46	32-40-56	37-46-66	42-51-73	46-56-81	50-61-87	53-66-94
Size 12 3 Nozzle	Airflow, cfm	1011	1517	2023	2529	3034	3540	4046
	Total Pressure, IN WG	0.031	0.070	0.124	0.193	0.278	0.379	0.495
	NC (Noise Criteria)	-	16	27	34	41	46	52
	Throw, FT	32-40-57	40-49-69	46-57-81	52-63-90	57-69-100	61-75-107	66-81-116
Size 12 4 Nozzle	Airflow, cfm	1324	2013	2684	3356	4027	4698	5369
	Total Pressure, IN WG	0.031	0.069	0.123	0.192	0.276	0.375	0.490
	NC (Noise Criteria)	-	16	27	35	43	49	53
	Throw, FT	36-45-64	45-56-78	52-64-92	59-71-102	64-78-113	69-85-122	75-92-132
Size 14 1 Nozzle	Airflow, cfm	444	666	888	1109	1331	1553	1775
	Total Pressure, IN WG	0.024	0.055	0.097	0.125	0.219	0.299	0.390
	NC (Noise Criteria)	-	-	18	27	33	39	44
	Throw, FT	21-26-37	26-32-45	29-37-53	34-41-59	37-45-65	40-49-70	43-53-75
Size 14 2 Nozzle	Airflow, cfm	866	1299	1732	2165	2597	3030	3463
	Total Pressure, IN WG	0.023	0.052	0.093	0.146	0.210	0.286	0.373
	NC (Noise Criteria)	-	12	23	30	37	43	47
	Throw, FT	30-36-51	36-45-64	41-51-74	47-58-83	51-64-91	56-69-98	60-74-106
Size 14 3 Nozzle	Airflow, cfm	1288	1932	2576	3220	3864	4508	5151
	Total Pressure, IN WG	0.023	0.052	0.092	0.144	0.207	0.281	0.368
	NC (Noise Criteria)	-	15	25	34	40	46	52
	Throw, FT	37-35-63	45-55-79	50-63-91	58-72-102	63-79-113	70-85-122	74-91-131
Size 14 4 Nozzle	Airflow, cfm	1710	2565	3420	4275	5130	5985	6840
	Total Pressure, IN WG	0.023	0.051	0.091	0.142	0.205	0.279	0.365
	NC (Noise Criteria)	-	16	26	36	41	47	53
	Throw, FT	42-51-72	51-63-89	57-72-103	66-81-116	72-89-128	79-96-138	84-103-148

- All pressures given are in inches of water
- Throw values given are for terminal velocities of 150, 100 and 50 fpm and for isothermal conditions. See the section, Engineering Guidelines for additional throw information.
- The throw values listed are with ceiling effect
- To obtain static pressure, subtract the velocity pressure from the total pressure
- If the diffuser is mounted on an exposed duct, the throw values are 70% of those listed in the table and will project downward
- Each NC value represents the noise criteria curve that will not be exceeded by the sound pressure in any of the octave bands, 2nd through 7th, with a room absorption of 10 dB, re 10⁻¹² watts
- Dash (-) in space denotes an NC value of less than 10
- Data obtained from tests conducted in accordance with ANSI/ASHRAE Standard 70-2006. Actual performance, with flexible duct inlet, may vary in the field. See the section, Engineering Guidelines for additional information.



Jet Nozzel Diffusers - CF

- Designed to handle large air capacity requirements and provide concentrated long throws
- Round nozzles are adjustable within mounting ring to 38B
- Duct or hard surface mountable
- Well suited for installations where the conditioned space is large, and where it is impractical to bring the duct work close to the occupants
- Optional aperture volume damper accessible on face of nozzle
- Extruded aluminum / aluminum construction



AVAILABLE MODEL:

CF / Aluminum

FINISHES

Standard Finish - #26 White

Optional Finishes - #01 Aluminum / #84Black

OVERVIEW

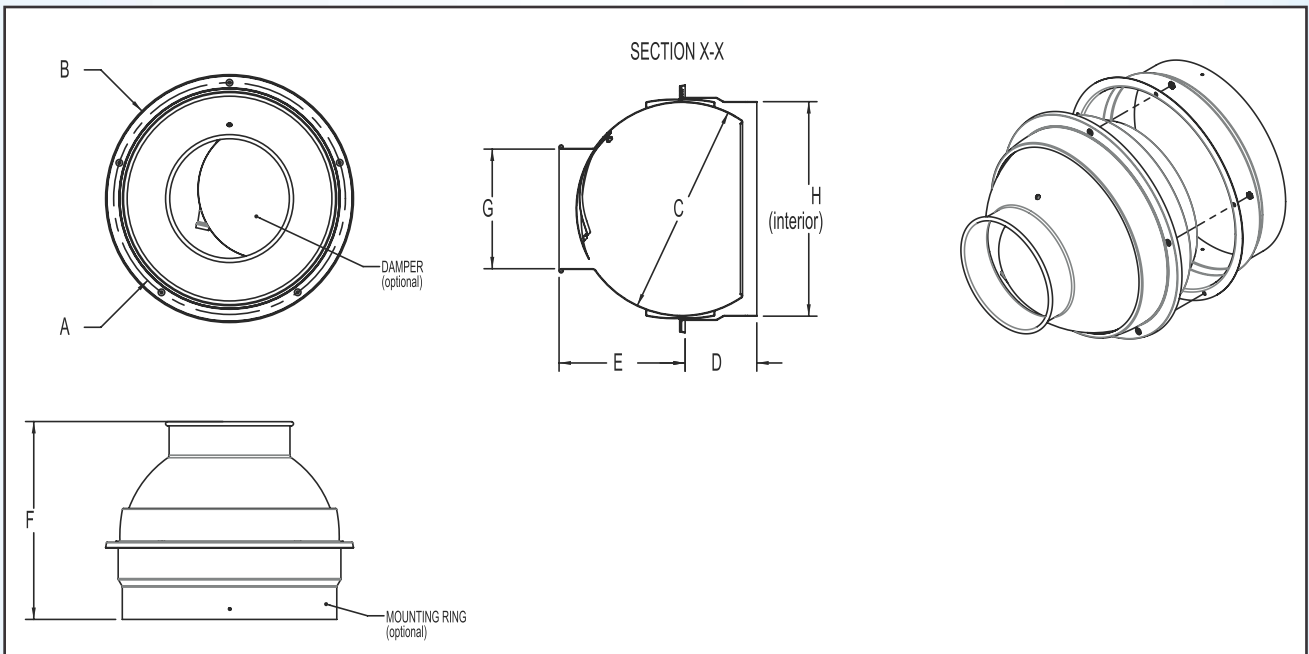
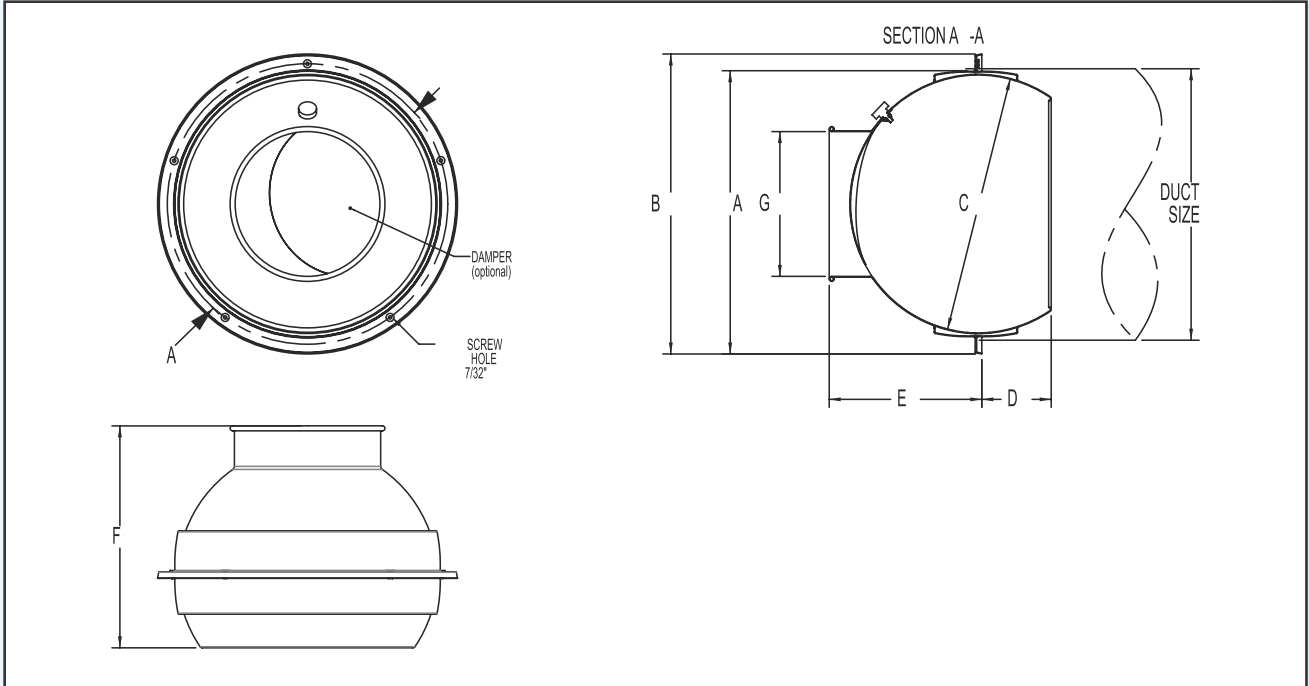
JET NOZZEL DIFFUSERS



CF diffusers are an excellent choice for applications that require large volumes of air with either directed and/or concentrated shots. Ideally suited for theaters, shopping malls, auditoriums, gyms and industrial applications. The CF provides a 0 to 38 ° adjustable discharge with optional aperture damper for volume control.



CF UNIT DIMENSIONS



All dimensions are in inches



PERFORMANCE DATA :

CF

Nominal Size	Nozzle Velocity, fpm	750	1000	1250	1500	1750	2000	2500	3000	3500	4000
	Velocity Pressure, IN WG	0.035	0.062	0.097	0.140	0.191	0.249	0.390	0.561	0.764	0.998
6	Airflow, cfm	40	50	60	70	80	90	120	140	160	190
	Total Pressure, IN WG	0.05	0.08	0.12	0.16	0.21	0.27	0.48	0.65	0.85	1.20
	NC (Noise Criteria)	-	-	-	-	-	-	22	26	30	34
	Throw, FT	6-12-21	7-15-24	9-17-26	10-20-28	12-21-30	13-23-32	17-26-37	20-28-40	21-30-43	23-33-47
8	Airflow, cfm	60	90	110	130	150	170	210	260	300	340
	Total Pressure, IN WG	0.04	0.08	0.13	0.18	0.23	0.30	0.46	0.70	0.93	1.20
	NC (Noise Criteria)	-	-	-	-	20	23	28	33	37	40
	Throw, FT	6-13-26	10-19-32	12-24-36	14-27-39	16-29-42	18-31-44	23-35-49	27-39-55	29-42-59	31-44-63
10	Airflow, cfm	120	170	210	250	290	330	410	500	580	660
	Total Pressure, IN WG	0.04	0.08	0.12	0.17	0.23	0.30	0.46	0.69	0.93	1.20
	NC (Noise Criteria)	-	-	-	-	-	21	27	32	36	39
	Throw, FT	9-19-37	13-26-44	16-33-49	19-38-54	22-41-58	26-44-62	32-49-69	38-54-76	41-58-82	44-62-87
12	Airflow, cfm	170	230	290	350	400	460	580	690	810	920
	Total Pressure, IN WG	0.04	0.08	0.12	0.17	0.23	0.30	0.48	0.68	0.93	1.20
	NC (Noise Criteria)	-	-	-	-	20	23	29	33	37	40
	Throw, FT	11-22-44	15-30-51	19-38-58	23-45-63	26-48-68	30-51-73	38-58-82	45-63-89	48-68-97	51-73-103
16	Airflow, cfm	340	450	560	670	780	900	1120	1340	1570	1790
	Total Pressure, IN WG	0.04	0.08	0.12	0.17	0.23	0.30	0.46	0.67	0.91	1.19
	NC (Noise Criteria)	-	-	-	20	24	27	33	38	42	45
	Throw, FT	16-32-63	21-42-72	26-53-80	32-62-88	37-67-95	42-72-102	53-80-114	62-88-124	67-95-134	72-102-144
20	Airflow, cfm	610	810	1020	1220	1420	1630	2040	2440	2850	3260
	Total Pressure, IN WG	0.04	0.07	0.12	0.17	0.23	0.30	0.47	0.67	0.92	1.20
	NC (Noise Criteria)	-	-	-	21	25	28	34	39	43	46
	Throw, FT	21-43-84	28-57-97	36-71-108	43-84-119	50-90-128	57-97-137	71-108-153	84-119-168	91-128-181	97-137-194

- All pressures given are in inches of water
- Throw values given are for terminal velocities of 200, 100 and 50 fpm and for isothermal conditions. See the section, Engineering Guidelines for additional throw information.
- The throw values listed are without ceiling effect
- For throw values with ceiling effect apply a correction factor of 1.4
- To obtain static pressure, subtract the velocity pressure from the total pressure
- Each NC value represents the noise criteria curve that will not be exceeded by the sound pressure in any of the octave bands, 2nd through 7th, with a room absorption of 10 dB, re 10⁻¹² watts
- Dash (-) in space denotes an NC value of less than 20
- Actual performance, with flexible duct inlet, may vary. See the section, Engineering Guidelines for additional information.

